



BEARINGS

Plummer blocks



Plummer blocks

Feature

The majority of MTK plummer block housing is made of gray cast iron and is of the models of SN, SNU and SAF. Its basic size conforms with ISO standard and could meet the requirement of bearing with inner ring of 20 mm - 160 mm. It could not be interchangeable with the other parts of the housing cap or the housing base. Two parts through the fixing "pins" to ensure their correct assembly.

Materials

Housing

Grade 200 (FC200), it is equivalent to U.S.A standard ASTM A-48 (Grade 35).

Accessories

Please refer to table 1.

Description	Part number	Materials
Felt Seal	FS	Wool + Rayon
Locating Ring	SR	Aluminum
Hexagon Bolt	M	Mild Steel
U-Ring	U-500 / U-600	NBR + Mild Steel Plate
Labyrinth Seal	LER / LOR	Aluminum + NBR
End Cover	500 NA / 500 UA	NBR + Mild Steel Plate
Eye-Bolt		Mild Steel
Cap		Plastic

Applicable bearings

All MTK plummer block housings applicable to the appropriate self-aligning ball bearings and spherical roller bearings, they are economic bearing units and normally require little maintenance.

Tolerances

Tolerance of housings bore-D

Please refer to table 2.
Unit: 0.001 mm

Bore mm	G7	H7	H8	J7
50 - 80	+40	+30	+46	+18
	+10	0	0	-12
80 - 120	+42	+35	+54	+22
	+12	0	0	-13
120 - 180	+54	+40	+63	+26
	+14	0	0	-14
180 - 250	+61	+46	+72	+30
	+15	0	0	-16
250 - 315	+69	+52	+81	+36
	+17	0	0	-16

Dimension of housings: A, F, d1, d2

Please refer to table 3.
unit:mm

Over	Incl.	A(h13)	F(H13)	d1(H12)	d2(H13)
18	30	0	+0,33	+0,21	+0,33
		-0,33	0	0	0
30	50	0	+0,39	+0,25	+0,39
		-0,39	0	0	0
50	80	0	+0,46	+0,3	+0,46
		-0,46	0	0	0
80	120	0	+0,54	+0,35	+0,54
		-0,54	0	0	0
120	180	0	+0,63	+0,4	+0,63
		-0,63	0	0	0

Tolerances of other dimensions of housings

Please refer to table 4 and table 5.

unit: mm

One side machining over		incl.	
5	100		± 1,5
10	200		± 2

Table 4

When the plummer block housing is under high temperature, great speed or heavy loading working environment, constant replacement of the lubricating grease is necessary. At this time, grease nipple is required at the housing cap.

The permitted loading capacity (SN, SNU)

unit:mm

General tolerances for casting					
length over	Incl.	thickness over		incl.	
up	120	± 1,5	up	10	± 1,5
120	250	± 2,0	10	18	± 2,0
250	400	± 3,0	18	30	± 3,0
400	800	± 4,0	30	50	± 3,5

Table 5

The permitted loading capacity of SN, SNU plummer block housing are related to the loading capacity and the strength of the bolt-screws. Under normal circumstances, plummer block housing is applicable to axial load. When the loading is from other directions, apart from axial, a check should be carried out to see the bolt-screws between the housing cap and the housing base, between the frame.

When working out the permitted loading capacity, the safety factor should be considered. In normal engineering, the safety factor of bolt-screw is 3. The safety factor of breaking loading capacity of the housing is 6.

The reference value of the breaking loading capacity of housing in different directions and the maximum loading capacity of bolt-screw is set out in below figure 1. The maximum loading capacity of plummer block housing could select P180° direction 2/3 of the breaking loading capacity. When the loading direction exceeds 90°, bolt screws should be fastened evenly with the housing set out in the table 6.

When the loading capacity direction is between 55° to 120° and face the axial load, the plummer block housing should be installed end-cover follow the axial direction or pin should be added between the housing base and frame.

Lubrication

SN and SNU plummer block housings usually uses grease for lubrication. During installation or periodic maintenance, the lubricating grease added is able to ensure that before next maintenance a good lubricating condition could be maintained. Lubricating grease usually uses lithium grease. The suitable temperature range is -30°C to +120°C. The filling quantity is 1/3 of the inner body of the housing base after the installation of the bearing. The normal usage life of the lubricating grease is 6 months. Upon expiry all the lubricating grease should be replaced.

Table 6

Housing size	Breaking loads for load direction						Maximum load of 2 cap bolts for load direction			Cap bolts size	Suggest tightening torque
	Pa	P55°	P90°	P120°	P150°	P180°	P120°	P150°	P180°		
	KN										
SNU 505	48	145	90	65	60	75	40	23	20	M 8x40	25
SNU 506-605, SN 206, 306, 506	55	165	100	75	65	85	40	23	20	M 8x40	25
SNU 507-606, SN 207, 307, 507, 606	60	180	110	80	75	90	60	35	30	M 10x50	40
SNU 508-607, SN 208, 308, 508, 607	67	200	120	90	80	100	60	35	30	M 10x50	40
SNU 509, SN 209, 309, 509	70	210	130	95	85	105	60	35	30	M 10x50	40
SNU 510-608, SN 210, 310, 510	80	240	145	110	95	120	60	35	30	M 10x50	40
SN 608							90	52	45	M 12x60	80
SNU 511-609, SN 211, 311, 511, 609	87	260	155	120	105	130	90	52	45	M 12x60	80
SNU 512-610, SN 213, 313, 512, 611	93	280	170	125	110	140	90	52	45	M 12x60	80
SNU 513-611, SN 213, 313, 513, 611	103	310	185	140	125	155	90	52	45	M 12x65	80
SNU 515-612, SN 215, 315, 515, 612	123	370	220	165	150	185	90	52	45	M 12x65	80
SNU 516-613	130	390	235	175	155	195	90	52	45	M 12x70	80
SN 216, 316, 516, 613							170	98	85	M 16x70	160
SNU 517	147	440	270	200	175	220	90	52	45	M 12x80	80
SN 217, SN 317, 517							170	98	85	M 16x80	160
SNU 518-615, SN 218, 318, 518, 615	173	520	310	235	210	260	170	98	85	M 16x90	160
SNU 519-616, SN 219, 319, 519, 616	180	540	330	245	215	270	170	98	85	M 16x90	160
SNU 520-617, SN 220, 320, 520, 617	190	570	340	255	230	285	260	150	130	M 20x100	200
SNU 522-619, SN 222, 522, 619	207	620	370	280	250	310	260	150	130	M 20x100	200
SNU 524-620, SN 224, 524, 620	243	730	440	330	295	365	260	150	130	M 20x100	200
SNU 526, SN 226, 526	277	830	500	375	330	415	380	220	190	M 24x120	200
SNU 528, SN 228, 528	327	980	590	440	390	490	380	220	190	M 24x120	350
SNU 530, SN 230, 530	370	1110	670	500	445	555	380	220	190	M 24x130	350
SNU 532, SN 232, 532	450	1350	810	610	540	675	380	220	190	M 24x130	350
SNU 530, SN 230, 530	370	1110	670	500	445	555	380	220	190	M24x130	350
SNU 532, SN 232, 532	450	1350	810	610	540	675	380	220	190	M,24x130	350

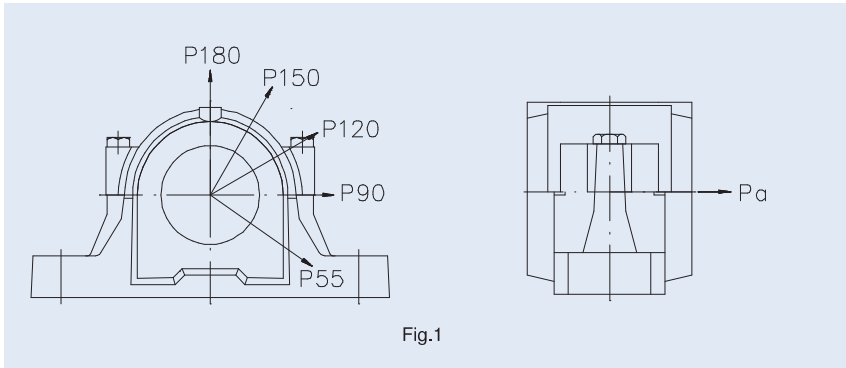


Fig.1

Specification of accessories (SN, SNU)

Locating ring

The bearing seating in the housing bore is machined to a tolerance H8 so that in most cases a loose fit of the bearing outer ring is assured and generally the seating width is such that the bearings has axial freedom. Installation of the locating rings : in case of two rings to be fixed on both sides of the bearing; in case of one ring to be fixed on the side with the sleeve nut. The symbol of the locating ring is SR. When customer place orders for it should state clearly the specification, size and quantity of the required locating ring.

Please refer to below drawing figure 2 and table 7.

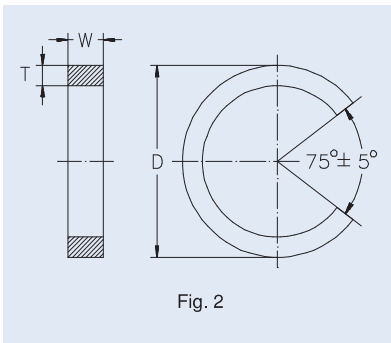


Fig. 2

unit:mm

Selection of locating rings

Table 7

Housing number	T	D	W ² _{0,2}
SN 206-SN 210 SN 506-SN 510 SN 306-SN 308 SN 606-SN 608 SNU 505-SNU 510	3,5		
SN 211-SN 230 SN 511-SN 520 SN 309-SN 320 SN 609-SN 620 SNU 511-SNU 530	5		Please refer to pages 442-465
SN 232 SN 532 SNU 532	7,5		

Nipple hole

SN, SNU plummer block housings will not supply grease nipple upon delivery under usual circumstances. If customer requests, we could supply according to the size / specification and please refer to table 8.

Selection of nipple holes

Table 8

Housing number	Nipple holes	Remarks
SN 206-SN 210 SN 506-SN 510 SN 306-SN 308 SN 606-SN 608 SNU 505-SNU 510	M6	
SN 211-SN 230 SN 511-SN 520 SN 309-SN 317 SN 609-SN 617 SNU 511-SNU 520	1/8 - 27 NTP	Or base on the request of client
SN 222-SN 232 SN 522-SN 532 SN 318-SN 320 SN 618-SN 622 SNU 522-SNU 532	1/4 - 18 NTP	

Seals

MTK will usually provide customers with 2 kinds of standards of seals. SN plummer block housing uses felt seal. SNU plummer block housing uses U-ring seal.

SN plummer block housing using felt seal is a simple but reliable one. It is of a contact / brushing type. It is suitable for -30°C to +100°C temperature. The perimeter contact rate is less than 4m/sec applicable situation. It can also be used in situation of greater speed. But in such situation there will be space between felt seal and machine shaft.

To ensure the function of felt seal, the coarse degree of the surface of the contact area between felt seal and machine shaft should be less than Ra1,6 μm. Before the fixing of oil seal, it should be soaked in hot oil for several minutes.

SNU plummer block housing uses U-ring seal is made

of NBR plus mild steel plate. Complete U-ring is made of two equal halves. U-ring seal has 2 thin lips having close contact with the machine shaft surface. It is suitable for temperature between -30°C to +100°C. The perimeter contact speed is less than 8 m/sec applicable situation. During installation, lubricating grease should be added into the space between the two rings. Besides, the contact surface between machine shaft and two lips should be polished before hand.

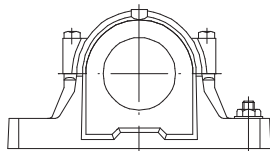
To avoid oil leakage, during installation one layer of very thin silicon should be placed on the two surfaces.

Eye bolts

Only available for sizes of SN224-SN232, SN318-SN320, SN524-SN532, SN618-SN620, SNU524-SNU532.

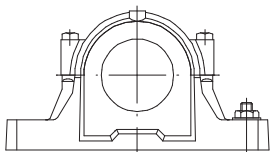
SNU 500 - 600

page 446



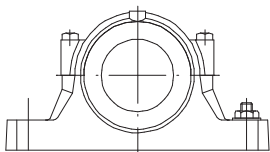
SNU 200 - 300

page 452



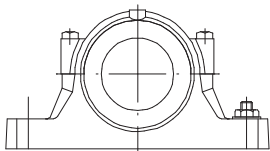
SN 500

page 458



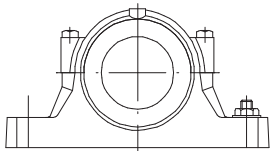
SN 600

page 462



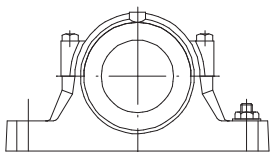
SN 200

page 464



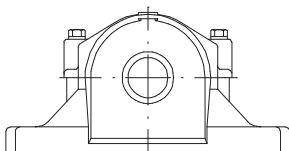
SN 300

page 468



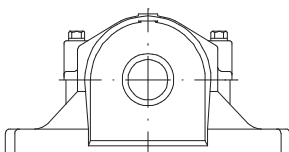
SAF 500

page 470

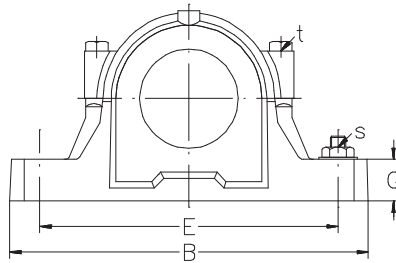


SAF 600

page 472

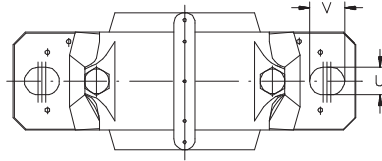
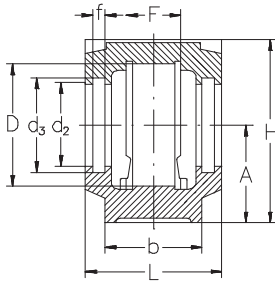


Plummer block housings



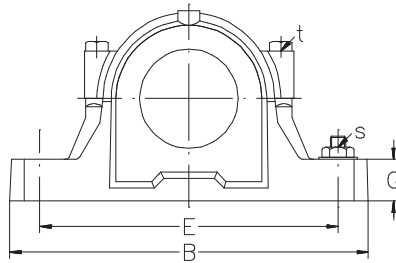
Shaft Plummer block housing
dia. dimensions

d	D	B	b	G	F	A	L	H	E	d ₂	d ₃	f	u	v	s	t
mm																
20	52	165	46	19	25	40	67	73	130	31,5	39,5	5	15	20	M12	M8
	62	185	52	22	32	50	77	88	150	36,5	44,5	5	15	20	M12	M8
25	62	185	52	22	32	50	77	88	150	36,5	44,5	5	15	20	M12	M8
	72	185	52	22	34	50	82	93	150	46,5	54,5	5	15	20	M12	M10
30	72	185	52	22	34	50	82	93	150	46,5	54,5	5	15	20	M12	M10
	80	205	60	25	39	60	85	107	170	51,5	59,5	5	15	20	M12	M10
35	80	205	60	25	39	60	85	107	170	51,5	59,5	5	15	20	M12	M10
	90	205	60	25	41	60	90	112	170	62,0	70,5	5	15	20	M12	M10
40	85	205	60	25	30	60	85	109	170	56,5	64,5	5	15	20	M12	M10
	100	255	70	28	44	70	95	127	210	67	75,5	5	18	24	M16	M12
45	90	205	60	25	41	60	90	112	170	62	70,5	5	15	20	M12	M10
	110	255	70	30	48	70	105	133	210	72	80,5	5	18	24	M16	M12
50	100	255	70	28	44	70	95	127	210	67	75,5	5	18	24	M16	M12
	120	275	80	30	51	80	110	148	230	77	85,5	5	18	24	M16	M12
55	110	255	70	30	48	70	105	133	210	72	80,5	5	18	24	M16	M12
	130	280	80	30	56	80	115	154	230	87	95,5	5	18	24	M16	M12
60	120	275	80	30	51	80	110	148	230	77	85,5	5	18	24	M16	M12
	140	315	90	32	58	95	120	175	260	92,5	101	5	22	28	M20	M16



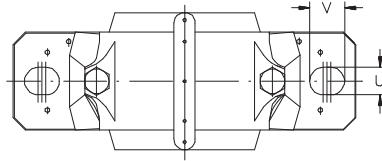
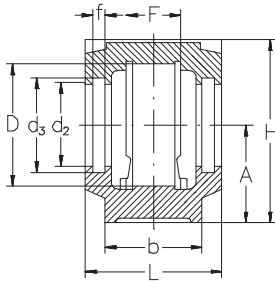
Plummer block housing	Housing size	Appropriate apartment		Adapter sleeve	Locating ring number	Seal number	End cover	Weight	
		Bearing number	Bearing number						
—								kg	
SNU 505	SNU 505	1205 K 2205 K	22205 K	H205	SR52x5	2	U 505	505 UA	1,4
SNU 506-605	SNU 605	1305 K 2305 K		H305	SR52x7	1	U 605	506 UA	1,9
				H305	SR62x7,5	2			
SNU 506-605	SNU 506	1206 K 2206 K	22206 K	H206	SR62x8	2	U 506	506 UA	1,9
SNU 507-606	SNU 606	1306 K 2306 K		H306	SR62x6	2	U 605	507 UA	2,0
				H306	SR72x7,5	2			
SNU 507-606	SNU 507	1207 K 2207 K	22207 K	H207	SR72x8,5	2	U 507	507 UA	2,0
SNU 508-607	SNU 607	1307 K 2307 K		H307	SR72x5,5	2	U 507	508 UA	2,7
				H307	SR80x9	2			
SNU 508-607	SNU 508	1208 K 2208 K	22208 K	H208	SR80x10,5	2	U 508	508 UA	2,7
SNU 510-608	SNU 608	1308 K 2308 K		H308	SR80x8	2	U 608	511 NA-510 UA	2,9
				H308	SR90x9	2			
SNU 509	SNU 509	1209 K 2209 K	22209 K	H209	SR85x5,5	2	U 509	509 UA	2,8
SNU 511-609	SNU 609	1309 K 2309 K		H309	SR85x7	1	U 609	512 NA-511 UA	4,5
				H309	SR100x9,5	2			
SNU 510-608	SNU 510	1210 K 2210 K	22210 K	H210	SR90x10,5	2	U 510	511 NA-510 UA	2,9
SNU 512-610	SNU 610	1310 K 2310 K		H310	SR90x9	2	U 610	513 NA-512 UA	5,0
				H310	SR110x10,5	2			
SNU 511-609	SNU 511	1211 K 2211 K	22211 K	H211	SR100x11,5	2	U 511	512 NA-511 UA	4,5
SNU 513-611	SNU 611	1311 K 2311 K		H311	SR100x9,5	2	U 611	515 NA-513 UA	6,3
				H311	SR120x11	2			
SNU 512-610	SNU 512	1212 K 2212 K	22212 K	H212	SR110x13	2	U 512	513 NA-512 UA	5,0
SNU 515-612	SNU 612	1312 K 2312 K		H312	SR110x10	2	U 612	517 NA-515 UA	6,6
				H312	SR130x12,5	2			
SNU 513-611	SNU 513	1213 K 2213 K	22213 K	H213	SR130x10	1			
SNU 516-613	SNU 613	1313 K 2313 K		H313	SR120x14	2	U 513	515 NA-513 UA	6,3
				H313	SR120x10	2	U 613	518 NA-516 UA	9,4
				H313	SR140x12,5	2			
				H2313	SR140x10	2			

Plummer block housings



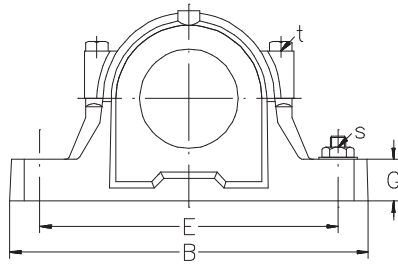
Shaft Plummer block housing
dia. dimensions

d	D	B	b	G	F	A	L	H	E	d ₂	d ₃	f	u	v	s	t
mm																
65	130	280	80	30	56	80	115	154	230	87	95,5	5	18	24	M16	M12
	160	345	100	35	65	100	140	191	290	102,5	111	5	22	28	M20	M16
70	140	315	90	32	58	95	120	175	260	92,5	101	5	22	28	M20	M16
	170	345	100	35	68	112	145	208	290	131,5	141	6	22	28	M20	M16
75	150	320	90	32	61	95	125	181	260	97,5	106	5	22	28	M20	M16
	180	380	110	40	70	112	160	214	320	137,5	147,5	6	26	32	M24	M20
80	160	345	100	35	65	100	140	191	290	102,5	111	5	22	28	M20	M16
	170	345	100	35	68	112	145	208	290	131,5	141	6	22	28	M20	M16
85	200	410	120	45	80	125	175	237	350	147,5	157,5	6	26	32	M24	M20
	180	380	110	40	70	112	160	214	320	137,5	147,5	6	26	32	M24	M20
90	215	410	120	45	86	140	185	271	350	157,5	167,5	6	26	32	M24	M20
	200	410	120	45	80	125	175	237	350	147,5	157,5	6	26	32	M24	M20
100	200	410	120	45	80	125	175	237	350	147,5	157,5	6	26	32	M24	M20
110	215	410	120	45	86	140	185	271	350	157,5	167,5	6	26	32	M24	M20



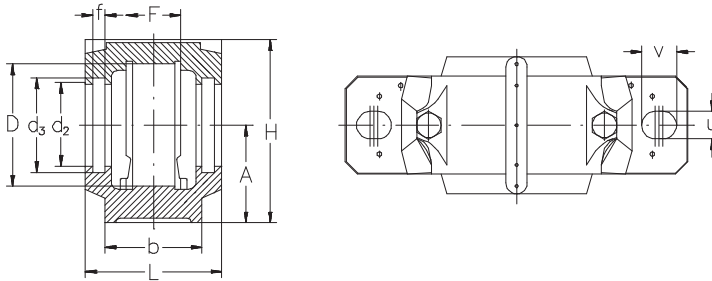
Plummer block housing	Housing size	Appropriate apartment		Adapter sleeve	Locating ring number	Seal number	End cover	Weight
		Bearing number	Bearing number					
—								kg
SNU 515-612	SNU 515	1215 K 2215 K	22215 K 21315 K 2315 K	H 215 H 315 H 315 H 2315	SR130x15,5 SR130x12,5 SR160x14 SR160X10	2 2 2 1	U 515 520 NA-518 UA	6,6 12,3
SNU 518-615	SNU 615	1315 K 2315 K	22315 K	H 216 H 316	SR140x16 SR140x12,5	2 2	U 516 518 NA-516 UA	9,4
SNU 516-613	SNU 516	1216 K 2216 K	22216 K	H 316 H 2316	SR170x14,5 SR170x10	2 1	U 616 526 NA-519 UA	13,5
SNU 519-616	SNU 616	1316 K 2316 K	21316 K 22316 K	H 316 H 2316	SR170x14,5 SR170x10	2 1	U 616 526 NA-519 UA	13,5
SNU 517	SNU 517	1217 K 2217 K	22217 K	H 217 H 317	SR150x16,5 SR150x12,5	2 2	U 517 519 NA-517 UA	9,8
SNU 520-617	SNU 617	1317 K 2317 K	21317 K 22317 K	H 317 H 2317	SR180x14,5 SR180x10	2 1	U 617 520 UA	16,6
SNU 518-615	SNU 518	1218 K 2218 K	22218 K 23218 K	H 218 H 318 H 2318	SR160x17,5 SR160x12,5 SR160x12,5	2 2 1	U 518 520 NA-518 UA	12,3
SNU 519-616	SNU 519	1219 K 2219 K	22219 K	H 219 H 319	SR170x18 SR170x12,5	2 2	U 519 526 NA-519 UA	13,5
SNU 522-619	SNU 619	1319 K 2319 K	21319 K 22319 K	H 319 H 2319	SR200x17,5 SR200x13	2 1	U 619 528 NA-522 UA	20,4
SNU 520-617	SNU 520	1220 K 2220 K	22220 K 23220 K	H 220 H 320 H 2320	SR180x18 SR180x12 SR180x9,7	2 2 1	U 520 520 UA	16,6
SNU 524-620	SNU 620	1320 K 2320 K	21320 K 22320 K	H 320 H 2320	SR215x19,5 SR215x13	2 1	U 620 530 NA-524 UA	25,0
SNU 522-619	SNU 522	1222 K 2222 K	22222 K 23222 K	H 222 H 322 H 2322	SR200x21 SR200x13,5 SR200x10,2	2 2 1	U 522 528 NA-522 UA	20,4
SNU 524-620	SNU 524		22224 K 23224 K	H 3124 H 2324	SR215x14 SR215x10	2 1	U 524 530 NA-524 UA	25,0

Plummer block housings



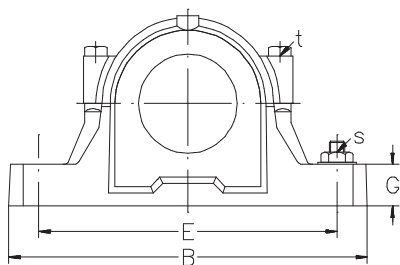
Shaft Plummer block housing
dia. dimensions

d	d ₁	D	B	b	G	F	A	L	H	E	d ₂	d ₃	f	u	vs	t
mm																
115	230	445	130	50	90	150	190	290	380	167,5	177,5	6	28	35	M24	M24
125	250	500	150	50	98	150	205	302	420	177,5	187,5	6	35	42	M30	M24
135	270	530	160	60	106	160	220	323	450	192,5	202,5	6	35	42	M30	M24
140	290	550	160	60	114	170	235	344	470	202,5	212,5	6	35	42	M30	M24



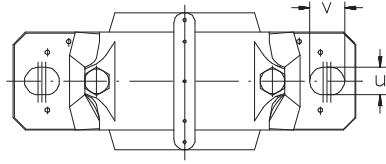
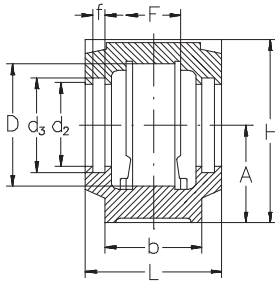
Plummer block housing	Housing size	Appropriate apartment Bearing number	Adapter sleeve	Locating ring	Seal number	End number	Cover	Weight
				number				
—								kg
SNU 526	SNU 526	22226 K 23226 K	H3126 H2326	SR230x13 SR230x10	2 1	U 526	532 NA-526 UA	29,8
SNU 528	SNU 528	22228 K 23228 K	H3128 H2328	SR250x15 SR250x10	2 1	U 528	528U A	37,5
SNU 530	SNU 530	22230 K 23230 K	H3130 H2330	SR270x16,5 SR270x10	2 1	U 530	530 UA	46,0
SNU 532	SNU 532	22232 K 23232 K	H3132 H2332	SR290x17 SR290x10	2 1	U5 32	532 UA	51,0

Plummer block housings



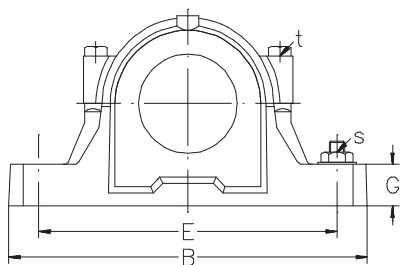
Shaft Plummer block housing
dia. dimensions

d	d ₁	D	B	b	G	F	A	L	H	E	d ₂	d ₃	f	u	v	s	t
mm																	
25	30	52	165	46	19	25	40	67	73	130	36,5	44,5	5	15	20	M12	M8
	30	52	165	46	19	25	40	67	73	130	31,5	39,5	5	15	20	M12	M8
	30	62	185	52	22	32	50	77	88	150	46,5	54,5	5	15	20	M12	M8
30	35	62	185	52	22	32	50	77	88	150	46,5	54,5	5	15	20	M12	M8
	35	62	185	52	22	32	50	77	88	150	36,5	44,5	5	15	20	M12	M8
	35	72	185	52	22	34	50	82	93	150	46,5	54,5	5	15	20	M12	M10
35	45	72	185	52	22	34	50	82	93	150	56,5	64,5	5	15	20	M12	M10
	45	72	185	52	22	34	50	82	93	150	46,5	54,5	5	15	20	M12	M10
	45	80	205	60	25	39	60	85	107	170	62	70,5	5	15	20	M12	M10
40	50	80	205	60	25	39	60	85	107	170	62	70,5	5	15	20	M12	M10
	50	80	205	60	25	39	60	85	107	170	51,5	59,5	5	15	20	M12	M10
	50	90	205	60	25	41	60	90	112	170	62	70,5	5	15	20	M12	M10
45	55	85	205	60	25	30	60	85	109	170	67	75,5	5	15	20	M12	M10
	55	85	205	60	25	30	60	85	109	170	56,5	64,5	5	15	20	M12	M10
	55	100	255	70	28	44	70	95	127	210	67	75,5	5	18	24	M16	M12
50	60	90	205	60	25	41	60	90	112	170	72	80,5	5	15	20	M12	M10
	60	90	205	60	25	41	60	90	112	170	62	70,5	5	15	20	M12	M10
	60	110	255	70	30	48	70	105	133	210	72	80,5	5	18	24	M16	M16



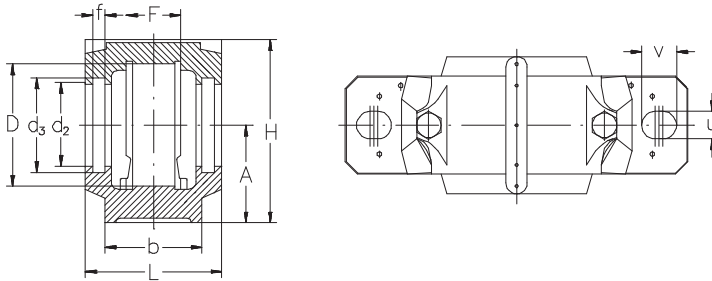
Plummer block housing	Housing size	Appropriate apartment		Locating number	cover	Weight Seal		
		Bearing number	ring number					
—						kg		
SNU 205	SNU 205	1205		SR 52X5	2	U 205	506 UA	1,4
		2205	22205	SR 52X7	1			
SNU 505	SNU 205/FS	1205		SR 52X5	2	FS 6X6X115	505 UA	1,4
		2205	22205	SR 52X7	1			
SNU 206	SNU 305	1305		SR 62X7,5	2	U 305	507 UA	1,8
		2305		SR 62X8	1			
SNU 206	SNU 206	1206		SR 62X8	2	U 206	507 UA	1,8
		2206	22206	SR 62X6	2			
SNU 506-605	SNU 206/FS	1206		SR 62X8	2	FS 6X6X130	506 UA	1,9
		2206	22206	SR 62X6	2			
SNU 507-606	SNU 306	1306		SR 72X7,5	2	U 206	507 UA	2,0
		2306		SR 72X7	1			
SNU 207	SNU 207	1207		SR 72X8,5	2	U 207	509 UA	1,9
		2207	22207	SR 72X5,5	2			
SNU 507-606	SNU 207/FS	1207		SR 72X8,5	2	FS 6X6X160	507 UA	2,0
		2207	22207	SR 72X5,5	2			
SNU 208	SNU 307	1307		SR 80X9	2	U 510	511 NA-510 UA	2,6
		2307		SR 80X8	1			
SNU 208	SNU 208	1208		SR 80X10,5	2	U 208	511 NA-510 UA	2,6
		2208	22208	SR 80X8	2			
SNU 508-607	SNU 208/FS	1208		SR 80X10,5	2	FS 6X6X175	508 UA	2,7
		2208	22208	SR 80X82	2			
SNU 510-608	SNU 308	1308	21308	SR 90X9	2	U 208	511 NA-510 UA	2,9
		2308	22308	SR 90X8	1			
SNU 209	SNU 209	1209		SR 85X5,5	2	U 209	512 NA-511 UA	2,7
		2209	22209	SR 85X7	1			
SNU 509	SNU 209/FS	1209		SR 85X5,5	2	FS 6X6X190	509 UA	2,8
		2209	22209	SR 85X7	1			
SNU 511-609	SNU 309	1309	21309	SR 100X9,5	2	U 209	512 NA-511 UA	4,5
		2309	22309	SR 100X8	1			
SNU 210	SNU 210	1210		SR 90X10,5	2	U 210	513 NA-512 UA	2,7
		2210	22210	SR 90X9	2			
SNU 510-608	SNU 210/FS	1210		SR 90X10,5	2	FS 6X6X210	511 NA-510 UA	2,9
		2210	22210	SR 90X9	1			
SNU 512-610	SNU 310	1310	22310	SR 110X10,5	2	U 210	513 NA-512 UA	5,0
		2310	22310	SR 110X8	1			

Plummer block housings



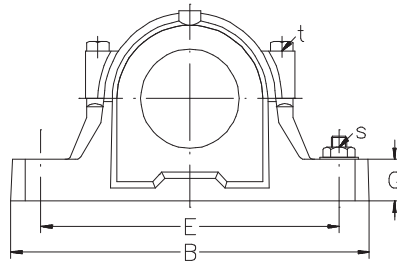
Shaft Plummer block housing
dia. dimensions

d	D	B	b	G	F	A	L	H	E	d ₁	d ₂	f ₁	f ₂	u	v	s	t
mm																	
55	65	100	255	70	28	44	70	95	127	210	77	85,5	5	18	24	M16	M12
	65	100	255	70	28	44	70	95	127	210	67	77,5	5	18	24	M16	M12
	65	120	275	80	30	51	80	110	148	230	77	85,5	5	18	24	M16	M12
60	70	110	255	70	30	48	70	105	133	210	87	95,5	5	18	24	M16	M12
	70	110	255	70	30	48	70	105	133	210	72	80,5	5	18	24	M16	M12
	70	130	280	80	30	56	80	115	154	230	87	95,5	5	18	24	M16	M12
65	75	120	275	80	30	51	80	110	148	230	92,5	101	5	18	24	M16	M12
	75	120	275	80	30	51	80	110	148	230	77	85,5	5	18	24	M16	M12
	75	140	315	90	32	58	95	120	175	260	92,5	101	5	22	28	M20	M16
70	80	150	320	90	32	61	95	125	181	260	97,5	106	5	22	28	M20	M16
75	85	130	280	80	30	56	80	115	154	230	102,5	111	5	18	24	M16	M12
	85	130	280	80	30	56	80	115	154	230	87	95,5	5	18	24	M16	M12
	85	160	345	100	35	65	100	140	191	290	102,5	111	5	22	28	M20	M16
80	90	140	315	90	32	58	95	120	175	260	108	116,5	5	22	28	M20	M16
	90	140	315	90	32	58	95	120	175	260	92,5	101	5	22	28	M20	M16
	90	170	345	100	35	68	112	145	208	290	131	141	6	22	28	M20	M16
85	95	150	320	90	32	61	95	125	181	260	112	120,5	5	22	28	M20	M16
	95	150	320	90	32	61	95	125	181	260	97,5	106	5	22	28	M20	M16
	95	180	380	110	40	70	112	160	214	320	137,5	147,5	6	26	32	M24	M20



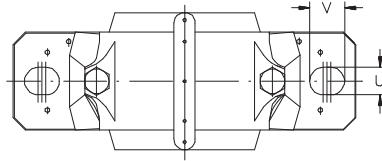
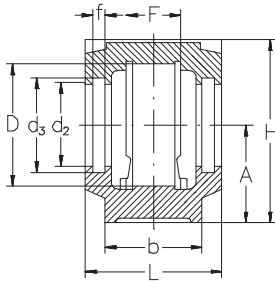
Plummer block housing	Housing size	Appropriate apartment		Seal number	End cover	Weight		
		Bearing number	Locating ring number				Locating ring number	qty.
—	—	—	—	—	—	kg		
SNU 211	SNU 211	1211	1211	SR100X11,5	2	U 211	515 NA-513 UA	4,3
SNU 511-609	SNU 211/FS	2211	2211	SR100X9,5	2	FS6X6X225	512 NA-511 UA	4,5
		2211	22211	SR100X11,5	2			
SNU 513-611	SNU 311	1311	21311	SR100X9,5	2	U 211	515 NA-513 UA	6,3
		2311	21311	SR120X11	2			
		2311	223111	SR120X8	1			
SNU 212	SNU 212	1212	2212	SR110X13	2	U 212	517 NA-515 UA	4,7
SNU 512-610	SNU 212/FS	2212	22212	SR110X10	2	FS6X6X240	513 NA-512 UA	5,0
		2212	22212	SR110X13	2			
SNU 515-612	SNU 312	1312	21312	SR110X10	2	U 212	517 NA-515 UA	6,6
		2312	22312	SR130X12,5	2			
SNU 213	SNU 213	1213	2213	SR130X10	1	U 213	518 NA-516 UA	5,9
		2213	22213	SR120X14	2			
SNU 513-611	SNU 213/FS	1213	2213	SR120X10	1	FS6X6X255	515 NA-513 UA	6,3
		2213	22213	SR120X14	2			
SNU 516-613	SNU 313	1313	21313	SR120X10	2	U 213	518 NA-516 UA	9,4
		2313	22313	SR140X12,5	2			
SNU 517	SNU 314	1314	21314	SR140X10	1	U 314	519 NA-517 UA	9,8
		2314	22314	SR150X13	2			
SNU 215	SNU 215	1215	2215	SR150X10	1	U 215	520 NA-518 UA	6,2
		2215	22215	SR130X15,5	2			
SNU 515-612	SNU 215/FS	1215	2215	SR130X12,5	2	FS6X6X290	517 NA-515 UA	6,6
		2215	22215	SR130X15,56	2			
SNU 518-615	SNU 315	1315	21315	SR130X12,5	2	U 215	520 NA-518-UA	12,3
		2315	22315	SR160X14	2			
SNU 216	SNU 216	1216	2216	SR160X10	1	U 216	216 UA	8,9
		2216	22216	SR140X16	2			
SNU 516-613	SNU 216/FS	1216	2216	SR140X12,5	2	FS6X6X305	518 NA-516 UA	9,4
		2216	22216	SR140X16	2			
SNU 519-616	SNU 316	1316	21316	SR140X12,5	2	U 316	526 NA-519 UA	13,5
		2316	22316	SR170X14,5	2			
SNU 217	SNU 217	1217	2217	SR170X10	1	U 217	217 UA	9,3
		2217	22217	SR150X16,5	2			
SNU 517	SNU 217/FS	1217	2217	SR150X12,5	2	FS6X6X320	519 NA-517 UA	9,8
		2217	22217	SR150X16,5	2			
SNU 520-617	SNU 317	1317	21317	SR150X12,5	2	U 317	520 UA	16,6
		2317	22317	SR180X14,5	2			
				SR180X10	1			

Plummer block housings



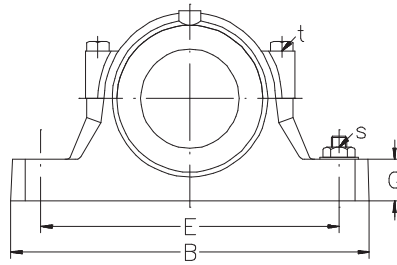
Shaft dia. Plummer block housing dimensions

d	D	B	b	G	F	A	L	H	E	d ₁	d ₂	f ₁	f ₂	u	v	s	t
mm																	
90	100	160	345	100	35	65	100	140	191	290	120	128,5	5	22	28	M20	M16
	100	160	345	100	35	65	100	140	191	290	102,5	111	5	22	28	M20	M16
95	110	200	410	120	45	80	125	175	237	350	147,5	157,5	6	26	32	M24	M20
100	115	180	380	110	40	70	112	160	214	320	137,5	147,5	6	26	32	M24	M20
	115	215	410	120	45	86	140	185	271	350	157,5	167,5	6	26	32	M24	M20
110	125	200	410	120	45	80	125	175	237	350	147,5	157,5	6	26	32	M24	M20
120	135	215	410	120	45	86	140	185	271	350	157,5	167,5	6	26	32	M24	M20
130	145	230	445	130	50	90	150	190	290	380	167,5	177,5	6	28	35	M24	M24
140	155	250	500	150	50	98	150	205	302	420	177,5	187,5	6	35	42	M30	M24
150	165	270	530	160	60	106	160	220	323	450	192,5	202,5	6	35	42	M30	M24
160	175	290	550	160	60	114	170	235	344	470	202,5	212,5	6	35	42	M30	M24



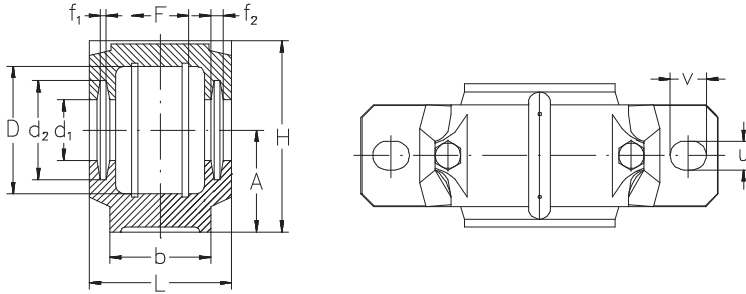
Plummer block housing	Housing size	Appropriate apartment		Seal number	End cover	Weight		
		Bearing number	Locating Ring number					
						kg		
SNU 218	SNU 218	1218	22218	SR160X17,5	2	U 218	218 UA	12,3
		2218	23218	SR160X12,5	2			
SNU 518-615	SNU 218/FS	1218	22218	SR160X12,5	1	FS6X6X340	520 NA-518 UA	12,3
		2218	22218	SR160X17,5	2			
		2218	23218	SR160X12,5	2			
SNU 522-619	SNU 1319	1319	21319	SR200X17,5	2	U 319	528 NA-522 UA	20,4
		2319	22319	SR200X13	1			
SNU 520-617	SNU 220	1220	22220	SR180X18	2	U 220	520 UA	16,6
		2220	23220	SR180X12	2			
SNU 524-620	SNU 320	1320	21320	SR180X9,7	1	U 320	530 NA-524 UA	25,0
		2320	22320	SR215X19,5	2			
SNU 522-619	SNU 222	1222	22222	SR215X13	1	U 222	528 NA-522 UA	20,4
		2222	23222	SR200X21	2			
SNU 524-620	SNU 224	1224	22224	SR200X13,5	2	U 224	530 NA-524 UA	25,0
		2224	23224	SR200X10,2	1			
SNU 526	SNU 226	1226	22226	SR215X14	2	U 226	532 NA-526 UA	29,8
		2226	23226	SR215X10	1			
SNU 528	SNU 228	1228	22228	SR230X13	2	U 228	528 UA	37,5
		2228	23228	SR230X10	1			
SNU 530	SNU 230	1230	22230	SR250X15	2	U 230	530 UA	46,0
		2230	23230	SR250X10	1			
SNU 532	SNU 232	1232	22232	SR270X16,5	2	U 232	532 UA	51,0
		2232	23232	SR270X10	1			

Plummer block housings



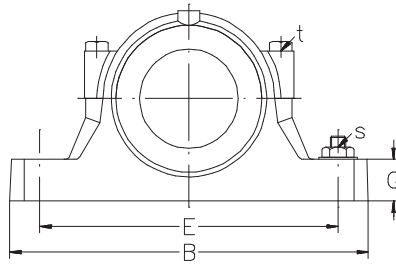
Shaft dia. Plummer block housing dimensions

d	D	B	b	G	F	A	L	H	E	d ₁	d ₂	f ₁	f ₂	u	v	s	t
mm																	
25	62	185	52	22	30	50	77	90	150	26,5	38	4	5,4	15	20	M12	M8
30	72	185	52	22	33	50	82	95	150	31,5	43	4	5,4	15	20	M12	M10
35	80	205	60	25	33	60	85	112	170	36,5	48	4	5,4	15	20	M12	M10
40	85	205	60	25	31	60	85	112	170	41,5	53	4	5,4	15	20	M12	M10
45	90	205	60	25	33	60	90	115	170	46,5	58	4	5,4	15	20	M12	M10
50	100	255	70	28	33	70	95	130	210	51,5	67	5	6,9	18	23	M16	M12
55	110	255	70	30	38	70	105	135	210	56,5	72	5	6,9	18	23	M16	M12
60	120	275	80	30	43	80	110	150	230	62	77	5	6,8	18	23	M16	M12
65	130	280	80	30	41	80	115	155	230	67	82	5	6,8	18	23	M16	M12
70	140	315	90	32	43	95	120	175	260	72	89	6	8,1	22	27	M20	M16
75	150	320	90	32	46	95	125	185	260	77	94	6	8,1	22	27	M20	M16
80	160	345	100	35	62,4	100	145	195	290	82	99	6	8,1	22	27	M20	M16
85	170	345	100	35	53	112	140	210	290	87	104	6	8,1	22	27	M20	M16
90	180	380	110	40	70,3	112	160	215	320	92	111	7	9,3	26	32	M24	M20



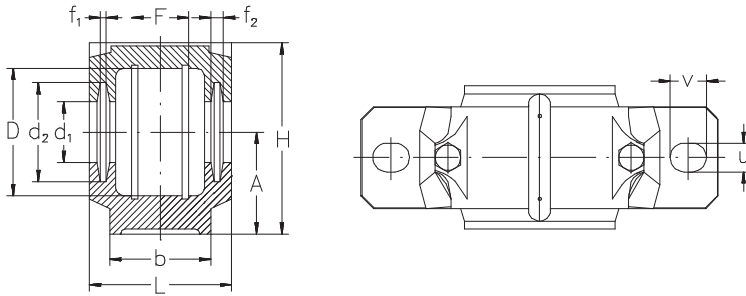
Plummer block housing	Housing size	Appropriate apartment		Adapter sleeve	Locating ring number	Seal number	End cover	Weight	
		Bearing number	number						
—	—	—	—	—	—	—	—	kg	
SN 506	SN 506	1206 K 2206 K	22206 K	H 206 H 306	SR 62X7 SR 62X10	2 1	FS6X6X105	506 NA	2,3
SN 507	SN 507	1207 K 2207 K	22207 K	H 207 H 207	SR 72X8 SR 72X10	2 1	FS6X6X120	507 NA	2,5
SN 508	SN 508	1208 K 2208 K	22208 K	H 208 H 308	SR 80X7,5 SR 80X10	2 1	FS6X6X135	508 NA	3,4
SN 509	SN 509	1209 K 2209 K	22209 K	H 209 H 309	SR 86X6 SR 85X8	2 1	FS6X6X150	509 NA	3,4
SN 510	SN 510	1210 K 2210 K	22210 K	H 210 H 310	SR 90X6,5 SR 90X10	2 1	FS6X6X165	510 NA	—
SN 511	SN 511	1211 K 2211 K	22211 K	H 211 H 311	SR 100X6 SR 100X8	2 1	FS6X9X190	511 NA-510 UA	4,8
SN 512	SN 512	1212 K 2212 K	22212 K	H 212 H 312	SR 110X8 SR 110X10	2 1	FS6X9X205	512 NA-511 UA	5,4
SN 513	SN 513	1213 K 2213 K	22213 K	H 213 H 313	SR 120X10 SR 120X12	2 1	FS6X9X220	513 NA-512 UA	6,3
SN 515	SN 515	1215 K 2215 K	22215 K	H 215 H 315	SR 130X8 SR 130X10	2 1	FS6X9X235	515 NA-513 UA	7,4
SN 516	SN 516	1216 K 2216 K	22216 K	H 216 H 316	SR 140X8,5 SR 140X10	2 1	FS8X10X255	516 NA	9,6
SN 517	SN 517	1217 K 2217 K	22217 K	H 217 H 317	SR 150X9 SR 150X10	2 1	FS8X10X270	517 NA-515 UA	9,8
SN 518	SN 518	1218 K 2218 K	22218 K 23218 K	H 218 H 318 H 2318	SR 160X16,2 SR 160X11,2 SR 160X10	2 2 1	FS8X10X285	518 NA-516 UA	14,2
SN 519	SN 519	1219 K	22219 K	H 219 H 319	SR 170X10,5 SR 170X10	2 1	FS8X10X300	519 NA-517 UA	15,2
SN 520	SN 520	2220 K	22220 K 22320 K	H 320 H 2320	SR 180X12,1 SR 180X10	2 1	FS9X10X320	520 NA-518 UA	19,0

Plummer block housings



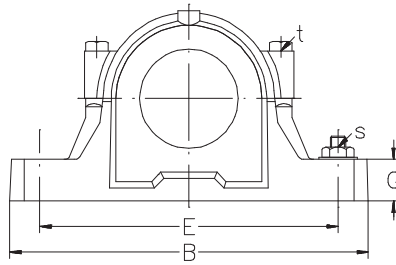
Shaft Plummer block housing
dia. dimensions

d	D	B	b	G	F	A	L	H	E	d ₁	d ₂	f ₁	f ₂	u	v	s	t
mm																	
100	200	410	120	45	80	125	175	239	350	102	125	8	10,8	26	32	M24	M20
110	215	410	120	45	86	140	185	270	350	113	135	8	10,7	26	32	M2	4 M20
115	230	445	130	50	90	150	190	290	380	118	140	8	10,7	28	36	M24	M24
125	250	500	150	50	98	150	205	305	420	128	154	9	12,2	33	42	M30	M24
135	290	530	160	60	106	160	220	325	450	138	164	9	12,2	33	42	M30	M24
140	290	550	160	60	114	170	235	340	470	143	173	10	13,7	33	42	M30	M24



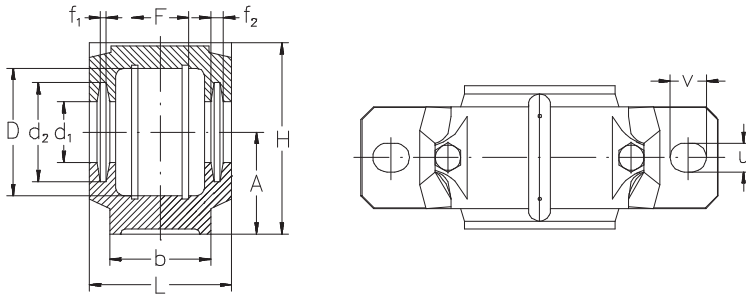
Plummer block housing	Housing size	Appropriate apartment		Adapter sleeve	Locating ring number	Seal number	End cover	Weight	
		Bearing number							
—	—	—	—	—	—	—	—	kg	
SN 522	SN 522	2222 K	22222 K 23222 K	H 322 H 2322	SR200X13,5 SR200X10	2 1	FS 10X13X360	522 NA	23,1
SN 524	SN 524		22224 K 23224 K	H 3124 H 2324	SR215X14 SR215X10	2 1	FS 10X13X390	524 NA	26,0
SN 526	SN 526		22226 K 23226 K	H 3126 H 2326	SR230X13 SR230X10	2 1	FS 10X13X410	526 NA-519 UA	32,7
SN 528	SN 528		22228 K 23228 K	H 3128 H 2328	SR250X15 SR250X10	2 1	FS 12X14X445	528 NA-522 UA	43,5
SN 530	SN 530		22230 K 23230 K	H 3130 H 2330	SR270X16,5 SR270X10	2 1	FS 12X14X475	530 NA- 524 UA	48,7
SN 532	SN 532		22232 K 23232 K	H 3132 H 2332	SR290X17 SR290X10	2 1	FS 12X14X500	532 NA- 526 UA	60,7

Plummer block housings



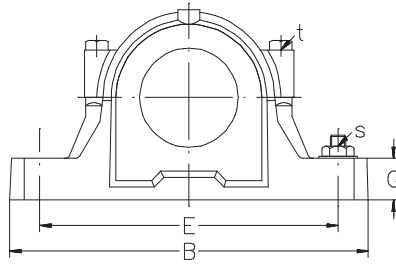
Shaft Plummer block housing
dia. dimensions

d	D	B	b	G	F	A	L	H	E	d ₁	d ₂	f ₁	f ₂	u	v	s	t
mm																	
25	72	185	52	22	37	50	82	95	150	26,5	38	4	5,4	15	20	M12	M10
30	80	205	60	25	41	60	90	110	170	31,5	43	4	5,4	15	20	M12	M10
35	90	205	60	25	43	60	95	115	170	36,5	48	4	5,4	15	20	M12	M12
40	100	255	70	28	46	70	105	130	210	41,5	53	4	5,4	18	23	M16	M12
45	110	255	70	30	50	70	115	135	210	46,5	58	4	5,4	18	23	M16	M12
50	120	275	80	30	53	80	120	150	230	51,5	67	5	6,9	18	23	M16	M12
55	130	280	80	30	56	80	125	155	230	56,5	72	5	6,9	18	23	M16	M12
60	140	315	90	32	58	95	130	175	260	62	77	5	6,8	22	27	M20	M16
65	160	345	100	35	65	100	140	195	290	67	82	5	6,8	22	27	M20	M16
70	170	345	100	35	68	112	145	215	290	72	89	6	8,1	22	27	M20	M16
75	180	380	110	40	70	112	155	218	320	77	94	6	8,1	26	32	M24	M20
80	190	400	110	33	74	112	160	230	320	82	99	6	8,1	26	35	M24	M20
85	200	420	120	36	77	125	170	245	350	87	104	6	8,1	26	35	M24	M20
90	215	420	120	38	83	140	175	280	350	92	111	7	9,3	26	35	M24	M20

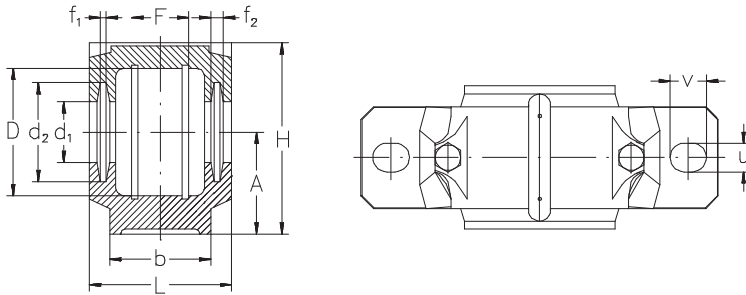


Plummer block housing	Housing size	Appropriate apartment Bearing number		Adapter sleeve	Locating Ring number	Seal number qty.	End cover	Weight	
								kg	
SN 606	SN 606	1306 K 2306 K		H 306 H 2306	SR 72X9 SR 72X10	2 1	FS 6X6X105	506 NA	2,2
SN 607	SN 607	1307 K 2307 K		H 307 H 2307	SR 80X10 SR 80X10	2 1	FS 6X6X120	507 NA	3,4
SN 608	SN 608	1308 K 2308 K	21308 K 22308 K	H 308 H 2308	SR 90X10 SR 90X10	2 1	FS 6X6X135	508 NA	3,4
SN 609	SN 609	1309 K 2309 K	21309 K 22309 K	H 309 H 2309	SR 100X10,5 SR 100X10	2 1	FS 6X6X150	509 NA	5,0
SN 610	SN 610	1310 K 2310 K	21310 K 22310 K	H 310 H 2310	SR 110X11,5 SR 110X10	2 1	FS 6X6X165	510 NA	5,4
SN 611	SN 611	1311 K 2311 K	21311 K 22311 K	H 311 H 2311	SR 120X12 SR 120X10	2 1	FS 6X9X190	511 NA-510 UA	6,8
SN 612	SN 612	1312 K 2312 K	21312 K 22312 K	H 312 H 2312	SR 130X12,5 SR 130X10	2 1	FS 6X9X205	512 NA-511 UA	7,1
SN 613	SN 613	1313 K 2313 K	21313 K 22313 K	H 313 H 2313	SR 140X12,5 SR 140X10	2 1	FS 6X9X220	513 NA-512 UA	10,0
SN 615	SN 615	1315 K 2315 K	21315 K 22315 K	H 315 H 2315	SR 160X14 SR 160X10	2 1	FS 6X9X235	515 NA-513 UA	13,8
SN 616	SN 616	1316 K 2316 K	21316 K 22316 K	H 316 H 2316	SR 170X14,5 SR 170X10	2 1	FS 8X10X255	516 NA	16,9
SN 617	SN 617	1317 K 2317 K	21317 K 22317 K	H 317 H 2317	SR 180X14,5 SR 180X10	2 1	FS 8X10X270	517 NA-515 UA	18,9
SN 618	SN 618	1318 K 2318 K	22318 K	H 318 H 2318	SR 190X15,5 SR 190X10	2 1	FS 8X10X285	518 NA-516 UA	19,8
SN 619	SN 619	1319 K 2319 K	22319 K	H 319 H 2319	SR 200X16 SR 200X10	2 1	FS 8X10X300	519 NA-517 UA	24,7
SN 620	SN 620	1320 K 2320 K	22320 K	H 320 H 2320	SR 215X18 SR 215X10	2 1	FS 9X10X320	520 NA-518 UA	27,0

Plummer block housings

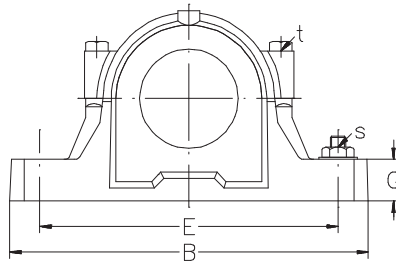


Shaft dia.		Plummer block housing dimensions															
d	D	B	b	G	F	A	L	H	E	d ₁	d ₂	f ₁	f ₂	u	v	s	t
mm																	
30	62	185	52	22	30	50	77	90	150	36,5	48	4	5,4	15	20	M12	M8
35	72	185	52	22	33	50	82	95	150	46,5	58	4	5,4	15	20	M12	M10
40	80	205	60	25	33	60	85	112	170	51,5	67	4	5,4	15	20	M12	M10
45	85	205	60	25	31	60	85	112	170	56,5	72	5	6,9	15	20	M12	M10
50	90	205	60	25	33	60	90	115	170	62	77	5	6,8	15	20	M12	M10
55	100	255	70	28	33	70	95	130	210	67	82	5	6,8	18	23	M16	M12
60	110	255	70	30	38	70	105	135	210	72	89	6	8,1	18	23	M16	M12
65	120	275	80	30	43	80	110	150	230	77	94	6	8,1	18	23	M16	M12
75	130	280	80	30	41	80	115	155	230	87	104	6	8,1	18	23	M16	M12
80	140	315	90	32	43	95	120	175	260	92	111	7	9,3	22	27	M20	M16
85	150	320	90	32	46	95	125	185	260	97	120	8	10,8	22	27	M20	M16
90	160	345	100	35	62,4	100	145	195	290	102	125	8	10,8	22	27	M20	M16
100	180	380	110	40	70,3	112	160	215	320	118	140	8	10,7	26	32	M24	M24



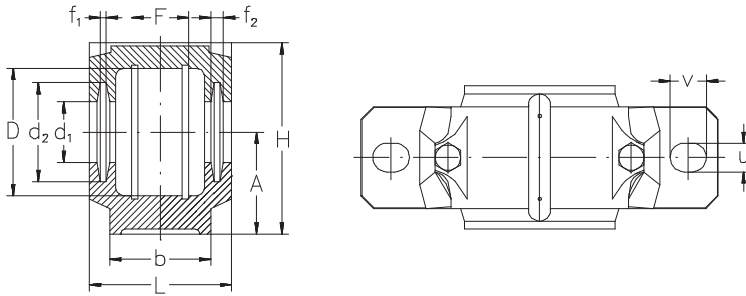
Plummer block housing	Housing size	Appropriate apartment		Locating ring	Seal number	End cover	Weight	
		Bearing number	Locating ring number					qty.
—	—	—	—	—	—	—	kg	
SN 206	SN 206	1206 2206	22206	SR62X7 SR62X10	2 1	FS6X6X135	508 NA	2,3
SN 207	SN 207	1207 2207	22207	SR72X8 SR72X10	2 1	FS6X6X165	510 NA	3,2
SN 208	SN 208	1208 2208	22208	SR80X7,5 SR80X10	2 1	FS6X9X190	511 NA-510 UA	3,2
SN 209	SN 209	1209 2209	22209	SR85X6 SR85X8	2 1	FS6X9X205	512 NA-511 UA	3,2
SN 210	SN 210	1210 2210	22210	SR90X6,5 SR90X10	2 1	FS6X9X220	513 NA-512 UA	3,3
SN 211	SN 211	1211 2211	22211	SR100X6 SR100X8	2 1	FS6X9X235	515 NA-513 UA	4,4
SN 212	SN 212	1212 2212	22212	SR110X8 SR110X10	2 1	FS8X10X255	516 NA	5,0
SN 213	SN 213	1213 2213	22213	SR120X10 SR120X12	2 1	FS8X10X270	517 NA-515 UA	5,9
SN 215	SN 215	1215 2215	22215	SR130X8 SR130X10	2 1	FS8X10X300	519 NA-517 UA	7,0
SN 216	SN 216	1216 2216	22216	SR140X8,5 SR140X10	2 1	FS9X10X320	520 NA-518 UA	8,9
SN 217	SN 217	1217 2217	22217	SR150X9 SR150X10	2 1	FS 10X13X340	217 NA	9,1
SN 218	SN 218	1218 2218	22218 23218	SR160X16,2 SR160X11,2 SR160X10	2 2 1	FS 10X13X360	522 NA	13,1
SN 220	SN 220	2220	22220 23220	SR180X12,1 SR180X10	2 1	FS 10X13X410	526 NA-519 UA	17,5

Plummer block housings



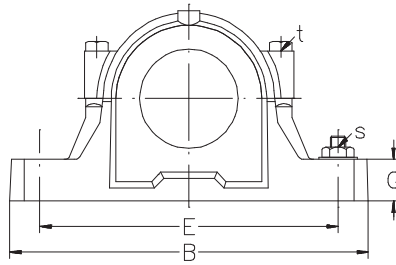
**Shaft Plummer block housing
dia. dimensions**

d	D	B	b	G	F	A	L	H	E	d ₁	d ₂	f ₁	f ₂	u	v	s	t
mm																	
110	200	410	120	45	80	125	175	239	350	128	154	9	12,2	26	32	M24	M20
120	215	410	120	45	86	140	185	270	350	138	164	9	12,2	26	32	M24	M20
130	230	445	130	50	90	150	190	290	380	148	178	10	13,7	28	36	M24	M24
140	250	500	150	50	98	150	205	305	420	158	188	10	13,7	33	42	M30	M24
150	270	530	160	60	106	160	220	325	450	168	198	10	13,7	33	42	M30	M24
160	290	550	160	60	114	170	235	340	470	178	208	10	13,7	33	42	M30	M24

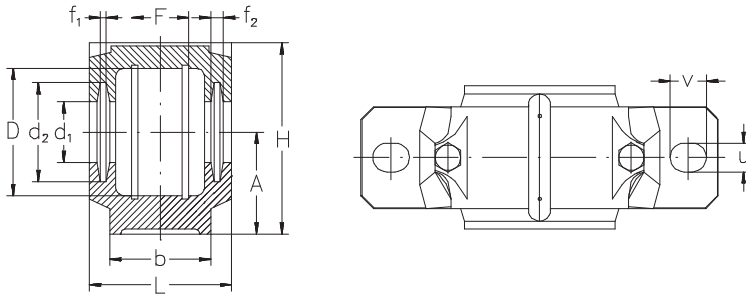


Plummer block housing	Housing size	Appropriate apartment		Locating ring number	Seal number	End cover	Weight
		Bearing number	Locating ring number				
—	—	—	—	—	—	—	kg
SN 222	SN 222	2222	22222 23222	SR200X13,5 SR200X10	2 1	FS12X14X445 528 NA-522 UA	21,6
SN 224	SN 224	2224	22224 23224	SR215X14 SR215X10	2 1	FS12X14X475 530 NA-524 UA	24,2
SN 226	SN 226	2226	22226 23226	SR230X13 SR230X1	2 1	FS12X17X515 226 NA	30,2
SN 228	SN 228	2228	22228 23228	SR250X15 SR250X10	2 1	FS12X17X545 228 NA	41,0
SN 230	SN 230	22230	22230 23230	SR270X16,5 SR270X10	2 1	FS12X17X580 230 NA	46,0
SN 232	SN 232	22232	22232 23232	SR290X17 SR290X10	2 1	FS12X17X610 232 NA	57,5

Plummer block housings

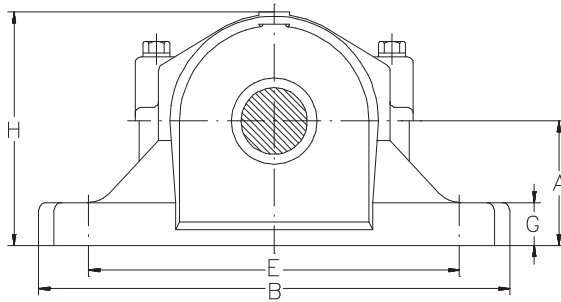


Shaft dia. d	Plummer block housing dimensions																
d	D	B	b	G	F	A	L	H	E	d ₁	d ₂	f ₁	f ₂	u	v	s	t
mm																	
30	72	185	52	22	37	50	82	95	150	36,5	48	4	5,4	15	20	M12	M10
35	80	205	60	25	41	60	90	110	170	46,5	58	4	5,4	15	20	M12	M10
40	90	205	60	25	43	60	95	115	170	51,5	67	5	6,9	15	20	M12	M12
45	100	255	70	28	46	70	105	130	210	56,5	72	5	6,9	18	23	M16	M12
50	110	255	70	30	50	70	115	135	210	62	77	5	6,8	18	23	M16	M12
55	120	275	80	30	53	80	120	150	230	67	82	5	6,8	18	23	M16	M12
60	130	280	80	30	56	80	125	155	230	72	89	5	8,1	18	23	M16	M12
65	140	315	90	32	58	95	130	175	260	77	94	6	8,1	22	27	M20	M16
75	160	345	100	35	65	100	140	195	290	87	104	6	8,1	22	27	M20	M16
80	170	345	100	35	68	112	145	215	290	92	111	6	9,3	22	27	M20	M16
85	180	380	110	40	70	112	155	218	320	97	120	7	10,8	26	32	M24	M16
90	190	400	110	33	74	112	160	230	320	102	125	8	10,8	26	35	M24	M20
95	200	420	120	36	77	125	170	245	350	113	135	8	10,7	26	35	M24	M20
100	215	420	120	38	83	140	175	280	350	118	140	8	10,7	26	35	M24	M20

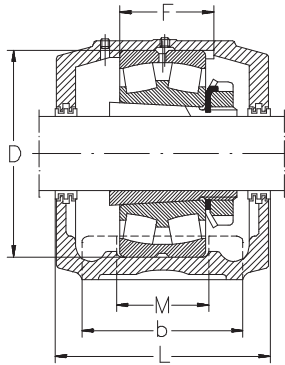


Plummer block housing	Housing size	Appropriate bearing number	Appropriate Locating ring number	Seal number	End cover	Weight	
						kg	
SN 306	SN 306	1306 2306		SR72X9 SR72X10	2 1	FS6X6X135 306 NA	2,2
SN 307	SN 307	1307 2307		SR80X10 SR80X10	2 1	FS6X6X165 510 NA	3,2
SN 308	SN 308	1308 2308	21308 22308	SR90X10 SR90X10	2 1	FS6X9X190 511 NA-510 UA	3,2
SN 309	SN 309	1309 2309	21309 22309	SR100X10,5 SR100X10	2 1	FS6X9X205 512 NA-511 UA	4,8
SN 310	SN 310	1310 2310	21310 22310	SR110X11,5 SR110X10	2 1	FS6X9X220 513 NA-512 UA	5,1
SN 311	SN 311	1311 2311	22311 22311	SR120X12 SR120X10	2 1	FS6X9X235 515 NA-513 UA	6,4
SN 312	SN 312	1312 2312	22312 22312	SR130X12,5 SR130X10	2 1	FS8X10X255 516 NA	6,7
SN 313	SN 313	1313 2313	22313 22313	SR140X12,5 SR140X10	2 1	FS8X10X270 517 NA-515 UA	9,6
SN 315	SN 315	1315 2315	21315 22315	SR160X14 SR160X10	2 1	FS8X10X300 519 NA-517 UA	13,4
SN 316	SN 316	1316 2316	21316 22316	SR170X14,5 SR170X10	2 1	FS9X10X320 520 NA-518 UA	16,2
SN 317	SN 317	1317 2317	21317 22317	SR180X14,5 SR180X10	2 1	FS10X13X340 317 NA	18,2
SN 318	SN 318	1318 2318	22318	SR190X15,5 SR190X10	2 1	FS10X13X360 522 NA	18,7
SN 319	SN 319	1319 2319	22319	SR200X16 SR200X10	2 1	FS10X13X390 524 NA	23,6
SN 320	SN 320	1320 2320	22320	SR215X18 SR215X10	2 1	FS10X13X410 526 NA-519 UA	25,7

Plummer block housings

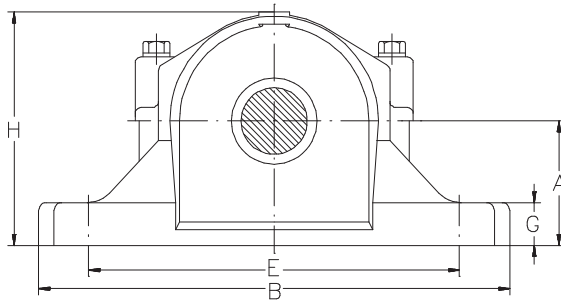


Shaft dia. stand. d	optional	Plummer block housing dimensions									
		D (G7)	B	b	G	F	A	L	H	E	E
mm										max.	min.
1-3/16	-	72	7-1/4	2	13/16	27	2	3-3/16	4-3/8	6-1/8	5-5/8
1-7/16	1-3/8;1-1/2	85	8-1/4	2-3/8	13/16	29	2-1/4	3-5/8	4-3/8	7	6-1/4
1-11/16	1-5/8;1-3/3	90	8-1/4	2-3/8	15/16	30	2-1/2	3-5/8	4-3/4	7	6-1/2
1-15/16	1-7/8;2	100	9-5/8	2-3/4	15/16	31	2-3/4	3-7/8	5-1/32	7-7/8	7-3/8
2-3/16	2-1/8;2-1/4	120	11	3-1/8	1	39	3	4-1/2	5-21/32	9-1/2	8-1/8
2-7/16	2-3/8;2-1/2	130	11-1/4	3-1/8	1-1/4	37	3-1/4	4-11/16	6-1/8	9-5/8	8-5/8
2-11/16	2-5/8;2-3/3	140	13	3-1/2	1-1/4	43	3-1/2	5-5/16	6-19/32	11	9-5/8
2-15/16	2-13/16;2-7/8;3	150	13	3-1/2	1-1/4	46	3-3/4	5	7-1/8	11	9-7/8
3-3/16	3-1/16;3-1/8;3-1/4	160	13-3/4	3-7/8	1-5/8	50	4	5-7/8	7-9/16	11-5/8	10-3/8
3-7/16	3-5/16;3-3/8;3-1/3	180	15-1/4	4-3/8	1-3/4	56	4-1/2	6-1/8	8-15/32	11-5/8	
3-15/16	3-13/16;3-7/8;4	200	16-1/2	4-3/4	2	63	4-15/16	6-1/2	9-11/32	14-1/2	12-5/8
4-3/16	4-1/16;4-1/8;4-1/4	215	16-1/2	4-3/4	2-1/8	68	5-1/4	7-3/8	10-3/16	14-1/2	13-1/4
4-7/16	4-5/16;4-3/8;4-1/2	230	18-3/8	5-1/4	2-3/8	74	6	8-1/8	11-5/16	16	14-5/8
4-15/16	4-13/16;4-7/8;5	250	20-1/8	5-7/8	2-3/8	78	6	7-5/8	11-3/4	17-1/8	16
5-3/16	5-1/8;5-1/4	270	21-1/4	6-1/4	2-1/2	83	6-5/16	8-3/8	12-1/2	18-1/4	17
5-7/16	5-3/8;5-1/2	290	22	6-1/4	2-5/8	90	6-11/16	8-3/4	13-5/16	19-1/4	17-3/8

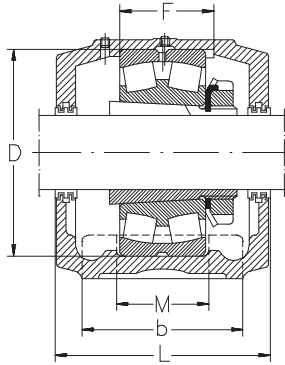


M	Bolts (no. req d)	Plummer block housing	Housing size	Appropriate Bearing number	apartment Adapter sleeve	Stab ring	Triple ring seal	End cover	Weight
mm		—							kg
-	(2)-3/8	SAF 507	SAF 1507 SAF 22507	1207 K 22207 K	SNW 7	SR 72x10x1 SR 72X4X1	LER 14	EPR 3	4,1
-	(2)-1/2	SAF 509	SAF 1509 SAF 22509	1209 K 22209 K	SNW 9	SR85X10X1 SR 85X6X1	LER 17	EPR 3	5,0
-	-(2)-1/2	SAF 510	SAF 1510 SAF 22510	1210 K 22210 K	SNW 10	SR90X10X1 SR90X7X1	LER 24	EPR 5	5,4
-	(2)-5/8	SAF 511	SAF 1511 SAF 22511	1211 K 22211 K	SNW 11	SR100X10X1 SR 100X6X1	LER 24	EPR 6	6,4
-	(2)-5/8	SAF 513	SAF 1513 SAF 22513	1213 K 22213 K	SNW 13	SR120X8X2 SR120X8X1	LER 29	EPR 6	9,5
1-7/8	(2))-5/8;(4)-1/2	SAF 515	SAF 1515 SAF 22515	1215 K 22215	SNW 15	SR 130X6X2 SR130X6X1	LER 37	EPR 7	10,9
2-1/8	(2)-3/4;(94)-5/8	SAF 516	SAF 1516 SAF 22516	1216 K 22216 K	SNW 16	SR140X8,5X2 SR140X10X1	LER 44	EPR 8	14,5
2-1/8	(2)-3/4;(4)-5/8	SAF 517	SAF 1517 SAF 22517	1217 K 22217 K	SNW 17	SR150X9X2 SR150X10X1	LER 53	EPR 9	15,9
2-1/8	(2)-3/4;(4)-5/8	SAF 518	SAF 22518	22218 K	SNW 18	SR160X10X1	LER 188	EPR 11	20,0
2-3/8	(2)-7/8;(4)-3/4	SAF 520	SAF 22520	22220 K	SNW 20	SR180X10X1	LER 102	EPR 12	33,6
2-3/4	(4)-3/4	SAF 522	SAF 22522	22222 K	SNW 22	SR200X10X1	LER 109	EPR 13	44,0
2-3/4	(4)-3/4	SAF 524	SAF 22525	22224 K	SNW 24	SR215X10X1	LER 113	EPR 14	54,4
3-1/4	(4)0-7/8	SAF 526	SAF 22526	22226 K	SNW 26	SR230X10X1	LER 117	EPR 15	72,6
3-3/8	(4)-1	SAF 528	SAF 22528	22228 K	SNW 28	SR250X10X1	LER 122	EPR 27	79,4
3-3/4	(4)-1	SAF 530	SAF 22530	22230 K	SNW 30	SR270X10X1	LER 125	EPR 16	99,8
3-3/4	(4)-1	SAF 532	SAF 22532	22232 K	SNW 32	SR290X10X1	LER 130	EPR 16	111,1

Plummer block housings



Shaft dia. stand. d	optional	Plummer block housing dimensions									
		D	B	b	G	F	A	L	H	E	E
mm										max.	min.
1-7/16	1-3/8;1-1/2	100	9-5/8	2-3/4	1	46	2-3/4	4-1/4	5-5/16	7-7/8	7-3/8
1-11/16	1-5/8;1-3/4	110	10-5/8	2-3/4	1-1/8	51	3	4-5/8	5-13/16	9	7-3/4
1-15/16	1-7/8;2	120	11	3-1/8	1-3/16	53	3-1/4	4-7/8	6-3/16	9-1/2	8-1/8
2-3/16	2-1/8;2-1/4	140	13	3-1/2	1-1/4	58	3-1/2	5-5/16	6-19/32	11	9-5/8
2-7/16	2-3/8;2-1/2	160	13-3/4	3-7/8	1-5/8	65	4	5-7/8	7-9/16	11-5/8	10-3/8
2-11/16	2-5/8;2-3/4	170	14-1/4	3-7/8	1-3/4	68	4-1/4	6-1/2	8-1/4	12-5/8	10-5/8
2-15/16	2-13/16;2-7/8;3	180	15-1/4	4-3/8	1-3/4	70	4-1/2	6-3/4	8-3/4	13-1/8	11-5/8
3-3/16	3-1/16;3-1/8;3-1/4	190	15-1/2	4-3/8	2	74	4-3/4	6-7/8	9-1/4	13-1/2	12
3-7/16	3-5/16;3-3/8;3-1/2	215	16-1/2	4-3/4	2-1/8	83	5-1/4	7-5/16	10-3/16	14-1/2	13-1/4
3-15/16	3-13/16;3-7/8;4	240	18-3/8	5-1/4	2-3/8	90	6	8-1/8	11-5/16	16	14-5/8



Plummer block housing dimensions		Plummer block housing	Housing size	Appropriate bearing number	Adapter sleeve	Stab ring	Triple ring seal	End cover	Weight
M	Bolts (no. req d)								
mm		—							kg
-	(2)-5/8	SAF 609	SAF 1609 SAF 22609	1309 K 22309 K	SNW 109	SR100X10,5X2 SR100X10X1	LER 17	EPR 2	7,7
-	(2)-5/8	SAF 610	SAF 1610 SAF 22610	1310 K 22310 K	SNW 110	SR110X12X2 SR110X11X1	LER 20	EPR 4	10,0
2	(2)-5/8;(4)-1/2	SAF 611	SAF 1611 SAF 22611	1311 K 22311 K	SNW 111	SE120X12X2 SR120X10X1	LER 24	EPR 5	12,2
2-1/8	(2)-3/5;(4)-5/8	SAF 613	SAF 1613 SAF 22613	1313 K 22313 K	SNW 113	SR140X12,5X2 SR140X10X1	LER 32	EPR 7	17,7
2-1/8	(2)-3/4;(4)-5/8	SAF 615	SAF 1615 SAF 22615	1315 K 22315 K	SNW 115	SR160X14X2 SR160X10X1	LER 37	EPR 7	24,9
2-1/8	(2)-3/4;(4)-5/8	SAF 616	SAF 1616 SAF 22616	1316 K 22316 K	SNW 116	SR170X14,5X2 SR170X10X1	LER 44	EPR 8	29,9
2-3/8	(2)-7/8;(4)-3/4	SAF 617	SAF 1617 SAF 22617	1317 K 22317 K	SNW 117	SR180X14,5X2 SR180X10X1	LER 184	EPR 10	39,5
2-1/4	(4)-3/4	SAF 618	SAF 1618 SAF 22618	1318 K 22318 K	SNW 118	SR190X15,5X2 SR190X10X1	LER 188	EPR 11	44,0
2-3/4	(4)-3/4	SAF 620	SAF 1620 SAF 22620	1320 K 22320 K	SNW 120	SR215X18X2 SR215X10X1	LER 102	EPR 12	56,7
3-1/4	(4)-7/8	SAF 622	SAF 1622 SAF 22622	1322 K 22322 K	SNW 122	SR240X20X2 SR240X10X1	LER 109	EPR 13	74,8